

General Purpose Hydraulic Cylinders

HSS Series



- 700 bar working pressure
- 5~160 ton capacity
- Suitable for lifting, test and workshop apps
- Hardened saddle against abrasion
- CE certified and 2 years warranty
- Reinforced special steel material
- Ergonomic special handle
- Spring return type (self retraction)
- Mounting screw holes at bottom of body
- Special final coat paint against corrosion
- Easily replaced dnp® (Italy) quick couplers
- Wide technical support and spare part capability
- Trade Mark: Hidrom®, Made in Turkiye

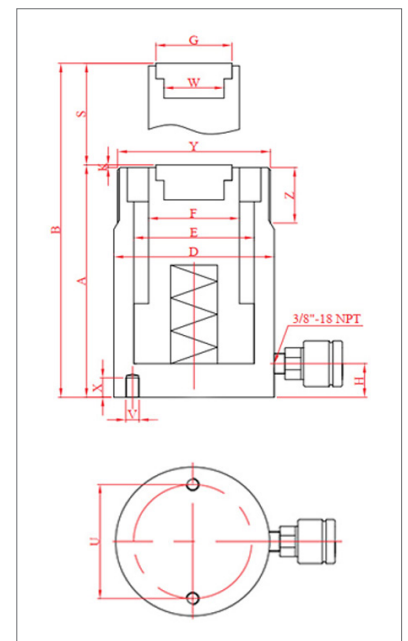
Capacity ton	Stroke mm	D mm	E mm	F mm	H mm	G mm	K mm	U mm	V mm	X mm	W mm	Y mm	Z mm
5	all	42	30	25	19	25	5	28	M6	12	3/4"-16	M40x1,5	26
10	all	60	45	36	19	29	3	39	M8	12	1"-8	2 1/4"-14	32
20	25/50/100	90	65	55	20	38	3	65	M10	12	1"-8	3 1/2"-12	45
	150/200	90	65	55	20	38	3	56	M10	12	1"-8	3 1/2"-12	45
30	all	100	75	60	27	45	3	70	M12	15	M35x2	3 7/8"-12	45
50	all	135	100	80	28	57	3	110	M12	15	M45x2,5	5 1/4"-12	45
80	all	160	120	100	32	82	5	125	M14	15	M70x2,5	6 1/4"-12	55
100	all	185	140	120	37	100	5	150	M16	20	M80x3	7"-12	65
150	all	225	170	150	47	125	5	180	M20	25	M100x3	M220x3	65



dnp® italy quick coupler



hardened saddle



General Purpose Hydraulic Cylinders

HSS Series

Code #	Capacity ton	Stroke mm	Eff. Area cm ²	Volume cm ³	Closed Length mm	Extracted Length mm	Weight kg
HSS005025	5	25	7,1	30	110	135	1
HSS005050	5	50	7,1	52	135	185	1,2
HSS005075	5	75	7,1	74	160	235	1,4
HSS005100	5	100	7,1	98	195	295	1,7
HSS005125	5	125	7,1	120	220	345	2
HSS005150	5	150	7,1	142	245	395	2,2
HSS005175	5	175	7,1	164	270	445	2,3
HSS005200	5	200	7,1	186	295	495	2,5
HSS010025	10	25	15,9	64	120	145	2,1
HSS010050	10	50	15,9	113	145	195	2,6
HSS010075	10	75	15,9	162	170	245	3
HSS010100	10	100	15,9	211	195	295	3,3
HSS010150	10	150	15,9	314	255	405	4,3
HSS010200	10	200	15,9	412	305	505	5,2
HSS010250	10	250	15,9	511	355	605	6
HSS010300	10	300	15,9	609	405	705	6,8
HSS010350	10	350	15,9	708	455	805	7,7
HSS020025	20	25	33,2	129	120	145	5,1
HSS020050	20	50	33,2	229	145	195	6,1
HSS020100	20	100	33,2	432	205	305	8,5

Complementary Equipment

The following complementary equipment can be purchased as a set together with cylinder or separately.



High Pressure Hose



Hydraulic Hand Pump



Gauge and Adapter

General Purpose Hydraulic Cylinders

HSS Series

Code #	Capacity ton	Stroke mm	Eff. Area cm ²	Volume cm ³	Closed Length mm	Extracted Length mm	Weight kg
HSS020150	20	150	33,2	640	265	415	10,9
HSS020200	20	200	33,2	849	325	525	13,4
HSS030050	30	50	44,2	306	160	210	8,1
HSS030100	30	100	44,2	584	220	320	10,9
HSS030150	30	150	44,2	863	280	430	13,8
HSS030200	30	200	44,2	1141	340	540	16,6
HSS050050	50	50	78,5	506	160	210	15,3
HSS050100	50	100	78,5	974	220	320	20,5
HSS050150	50	150	78,5	1454	300	450	27,9
HSS050200	50	200	78,5	1909	350	550	32,2
HSS080050	80	50	113	789	180	230	24,3
HSS080100	80	100	113	1481	240	340	31,8
HSS080150	80	150	113	2195	310	460	40,9
HSS100050	100	50	153,9	1102	195	245	35,1
HSS100100	100	100	153,9	2007	250	350	44,4
HSS100150	100	150	153,9	2969	315	465	56
HSS150100	150	100	226,9	3076	275	375	74,5
HSS150150	150	150	226,9	4406	335	485	90,3

Similar Products

The following products can also be selected according to the requirements of application.



Low Height Cylinders



Hollow Plunger Cylinders



Low Profile Cylinders